

Contact Resistance Meter

Model : DAC-MR-100A/50A



■ **Application** : Contact Resistance Measurement for; Power Circuit Breaker, Switch Gear, Bus Bar, Joint
Conductive Resistance Measurement for cables

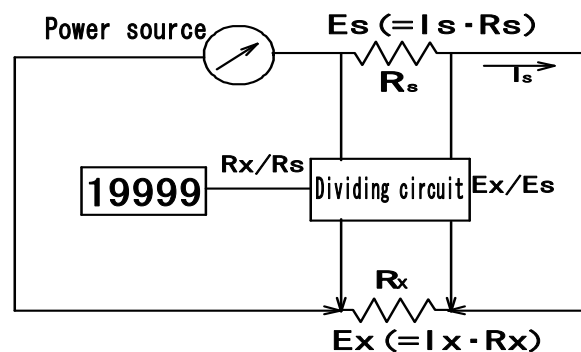
- **Feature**
- Light and durable, only 8kgs.
 - Measuring Current, 100A and 50A
 - Resolution : 0.1 u ohm
 - Kelvin Clips for Quasi Four Terminal Measurements.

Symptom

A standard resistor, R_s , is introduced as in the circuit diagram. A common current, I_s , flows to both of the resistor, R_s , and a specimen, R_x , under test. Thus, a voltage drop, $I_s R_s = E_s$ for R_s and $I_s R_x = E_x$ for R_x , generates separately. The voltages, E_s and E_x , are divided in the circuit. Then, a ratio for R_x/R_s is given digitally.

$$E_x/E_s = I_s R_x / I_s R_s = R_x/R_s$$

A double bridge circuit is required for giving such a very low resistance as 0.1 micro ohm. SOKEN Contact Resistance Meter, DAC-MR-50A/100A is applied for measurement with the resolution range at both of laboratories and testing site instantly and easily. Two types, DAC-MR-50A for 50A and DAC-MR-100A for 100A, are available.

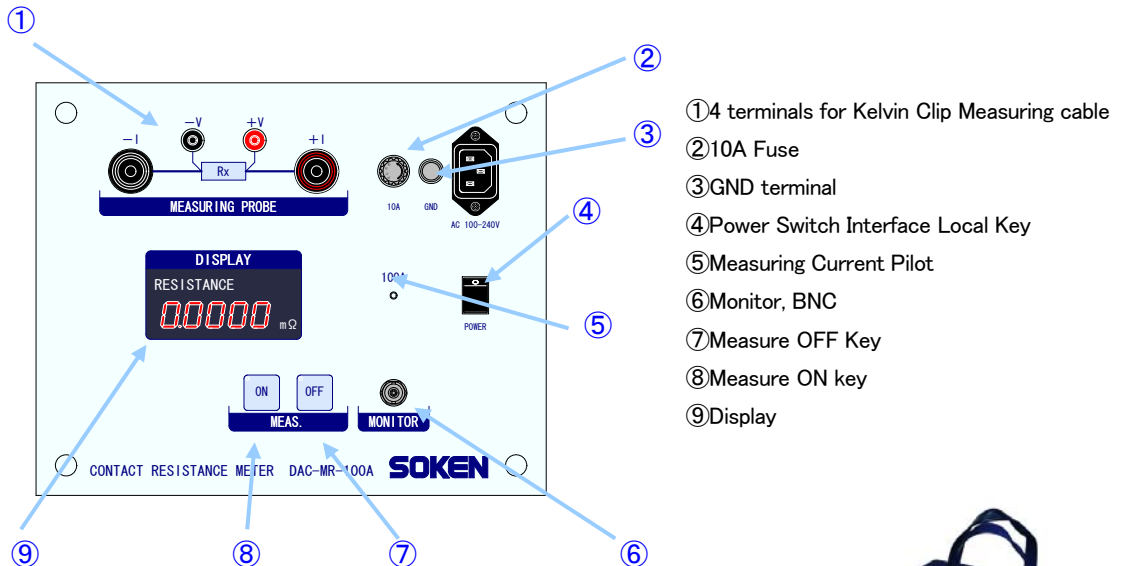


Contact Resistance Meter

Model : DAC-MR-100A/50A

	DAC-MR-100A	DAC-MR-50A
Measuring Range	0-1.9999m ohm	0-1.9999m ohm 0-19.999m ohm
Measuring Current	DC100A±3%	DC100A±3%
Resolution	0.1 u ohm	
Accuracy	±(0.5%Rdg+3digits) at 1/10 of full scale or more ±(0.5%Rdg+3digits) at 1/10 of full scale or less	
Measuring Current Output	1.000V/100A	1.000V/50A
Power Consumption	800VA	410VA
AC Mains	AC85~132V/170~264V 50/60Hz	
Size	W305xH245xD250(mm)	W305xH245xD250(mm)
Weight	8.4 kgs	7.4 kgs
Accessory	Kelvin Clip(4 terminals) Measuring Cable (3 meters) 1 pc AC Cord 1 pc Spare Fuse (3A) 1 pc Grounding Cable, Grounding Clip 1 pc	

Explanation of Panel



Specifications are subject to change for improvements without prior notice.



Head Office & Plants
ISO 9001 Accredited

SOKEN

SOKEN ELECTRIC CO., LTD.

<http://www.soken-jp.com>

3-57-124 Kami-Ishihara, Choufu-City, Tokyo 182-0035 JAPAN

TEL +81 42 490 6929 (Export Dept.) FAX +81 42 490 6807

TEL +81 42 490 6925 (Main)